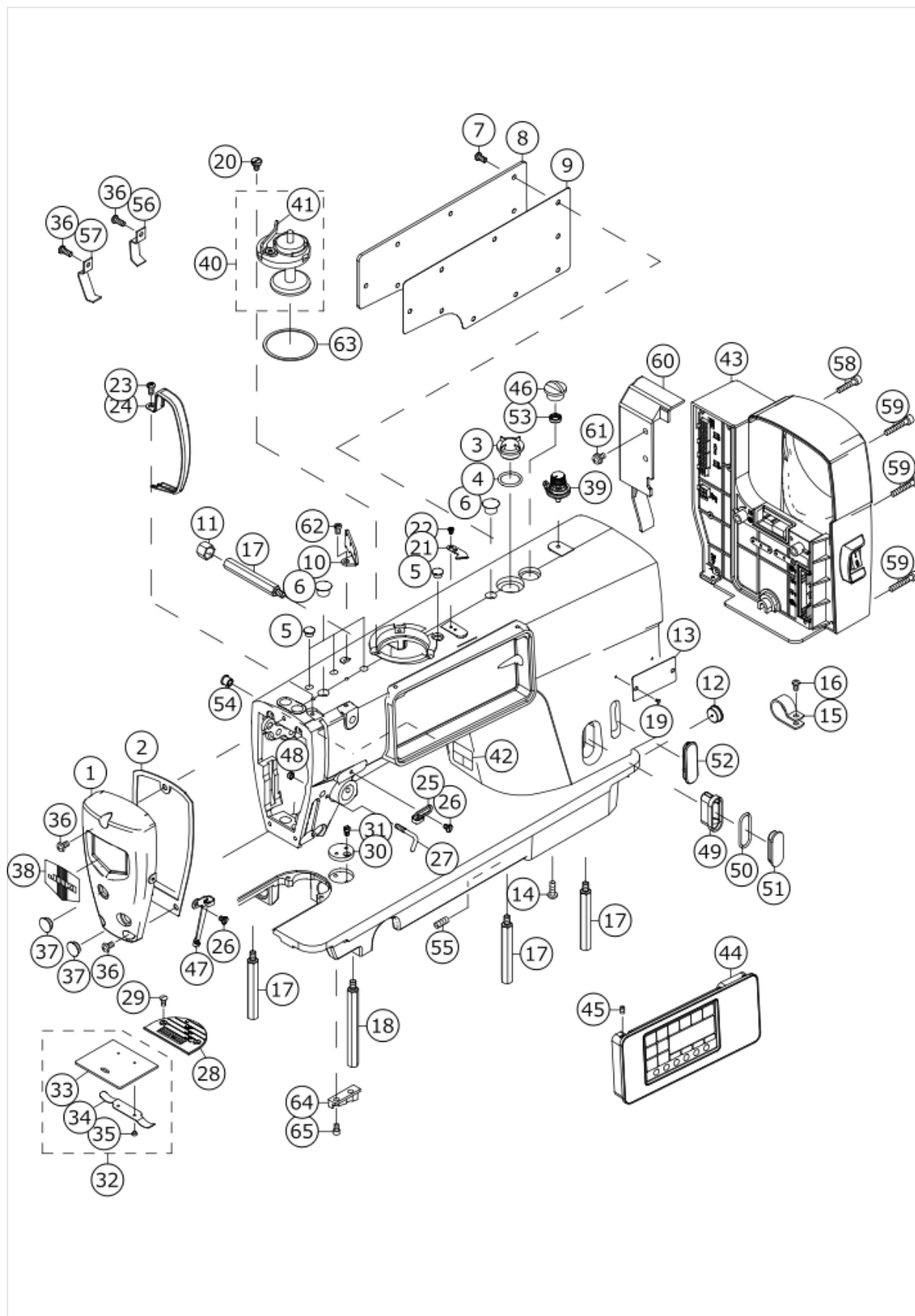


# DDL-900C

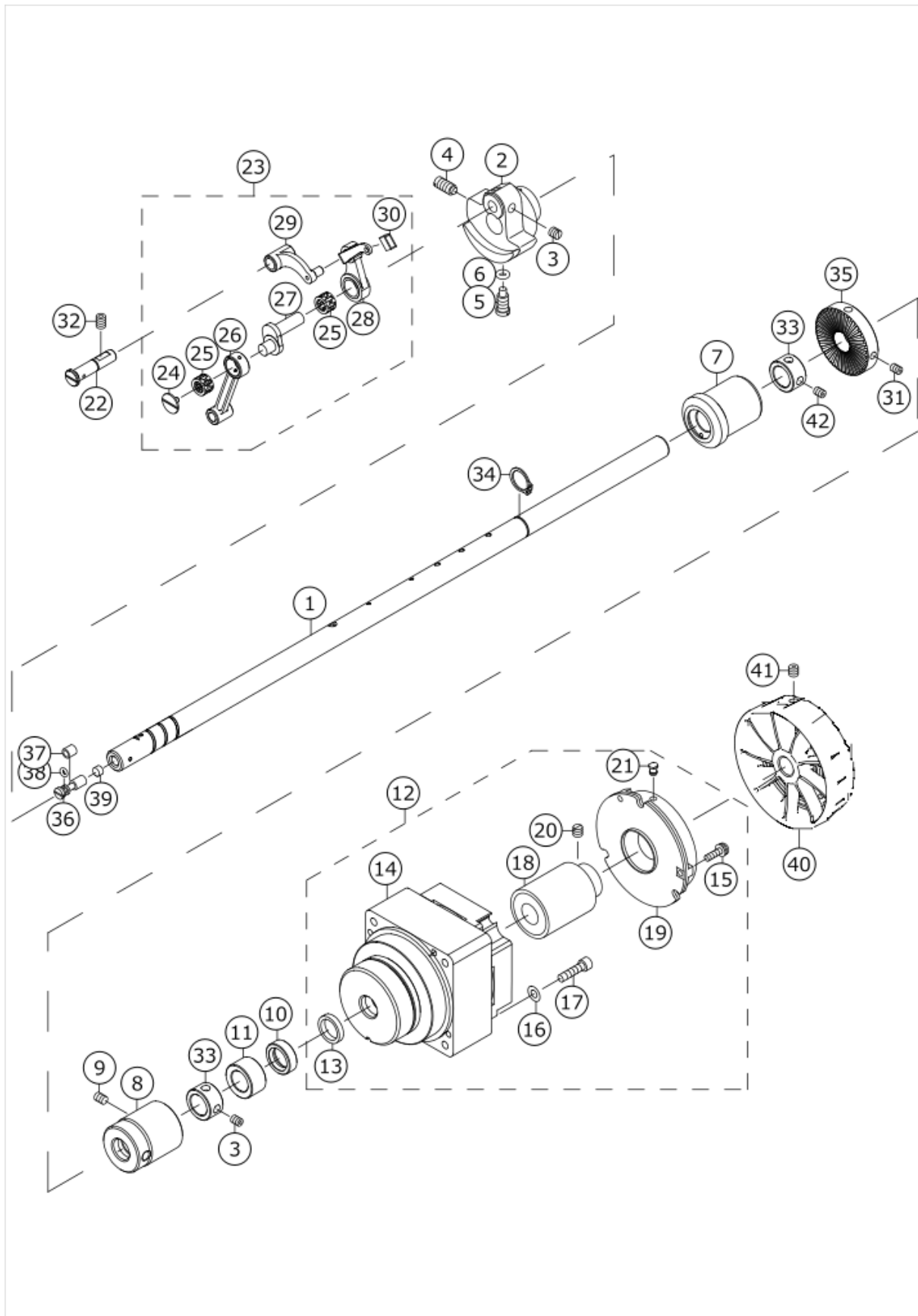
## MACHINE FRAME & MISCELLANEOUS COVER COMPONENTS



No.	品番	品名	備考	子部品	消耗品	個数
1	40263284	FACE PLATE				1.00
2	40263285	FACE PLATE GASKET				1.00
3	40263286	OIL WINDOW				1.00
4	40263287	THRUST COLLAR ASM				1.00
5	40263288	RUBBER PLUG				5.00
6	40263289	RUBBER PLUG				1.00
7	40263290	SCREW				8.00
8	40263291	SIDE PLATE				1.00
9	40263292	SIDE PLATE GASKET				1.00
10	40263293	OVER LINE BOARD				1.00
11	40263294	RUBBER SLEEVE				1.00
12	40263295	RUBBER PLUG				1.00
13	40263296	MODEL PLATE				1.00
14	40263297	SCREW				2.00
15	40263298	WIRE CLAMP				2.00
16	40263299	SCREW				2.00
17	40263302	BED SCREW STUD(ONE)				4.00
18	40263303	BED SCREW STUD(TWO)				1.00
19	40263304	POLE				2.00
20	40263305	SCREW				3.00
21	40263306	THREAD CUTTER				1.00
22	40263307	SCREW				2.00
23	40263308	SCREW				1.00
24	40263309	THREAD TAKE-UP LEVER COVER				1.00
25	40263310	RIGHT ARM THREAD GUIDE				1.00
26	40263311	SCREW				2.00
27	40263312	LARGE ARM THREAD GUIDE				1.00
28	40263313	NEEDLE PLATE				1.00
29	40263314	SCREW				2.00
30	40263315	RULER PLATE				1.00
31	40263316	SCREW				1.00
32	40263317	SLIDE PLATE ASM				1.00
33	40263318	SLIDE PLATE		*		1.00
34	40263319	SPRING OF SLIDE PLATE		*		1.00
35	40263320	SCREW		*		2.00
36	40263321	SCREW				6.00
37	40263322	RUBBER PLUG				2.00
38	22902506	PLATE				1.00
39	40263323	BOBBIN THREAD TENSION ASM				4.00
40	40263324	BOBBIN WINDER ASM				1.00
41	40264679	BTW_LEVER		*		1.00
42	40263326	SAFETY-INDICATING PLATE				1.00
43	40259438	ELECTRONIC CONTROL UNIT				1.00
44	40259439	OPERATING SCREEN				1.00
45	40263330	SCREW				2.00
46	40263333	A KNOB				1.00
47	40263334	LEFT ARM THREAD GUIDE				1.00
48	40263335	NUT				1.00
49	40263336	OIL WINDOW				1.00
50	40263337	RUBBER PING				1.00

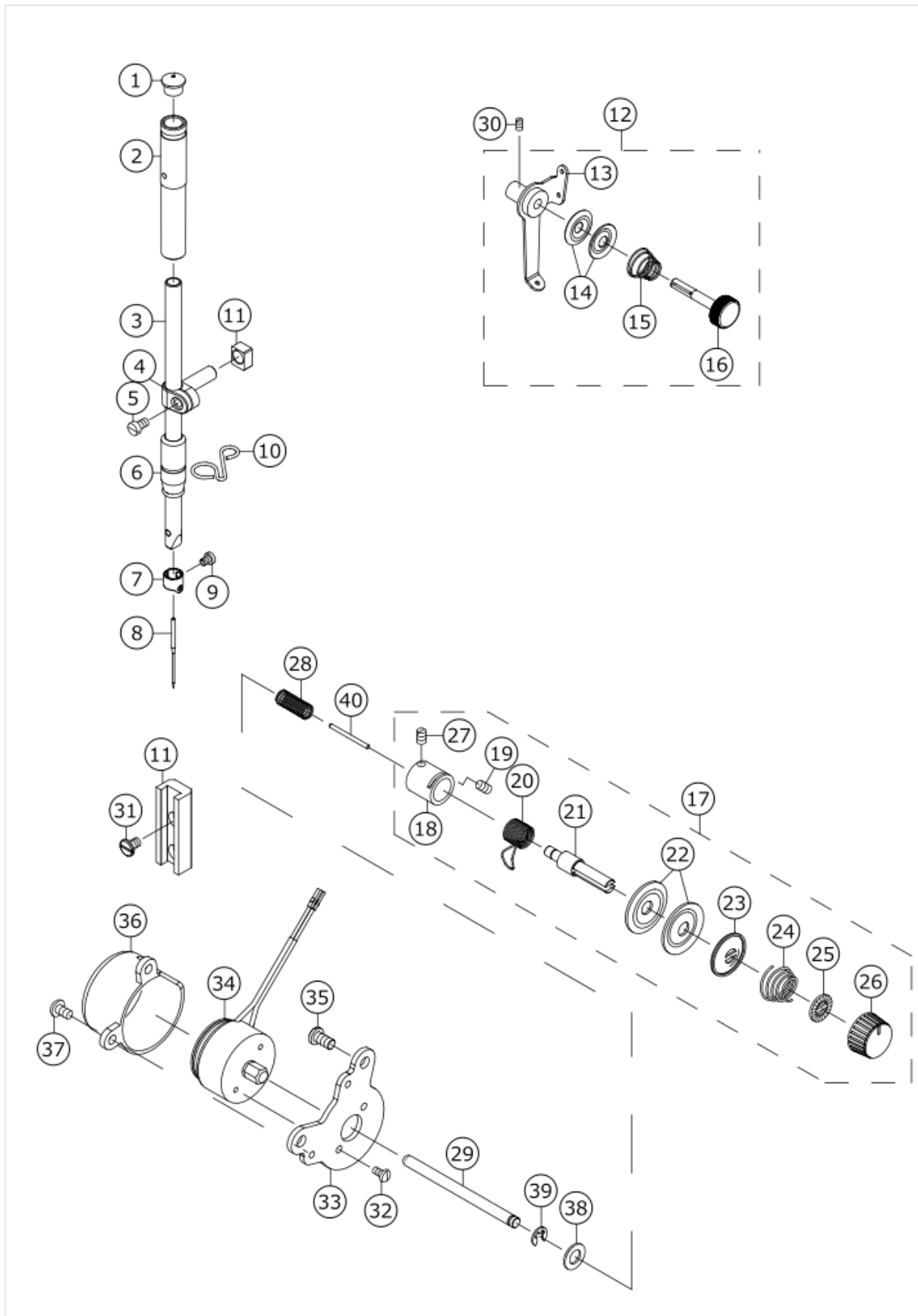
51	40263338	OIL WINDOW				1.00
52	40263339	HOLE COVER				1.00
53	40263340	GASKET				1.00
54	40263341	RUBBER PLUG				1.00
55	40263342	SCREW				1.00
56	40263343	CORD HOLDER(S)				2.00
57	40263344	CORD HOLDER(L)				2.00
58	40264671	SCREW				1.00
59	40264672	SCREW				3.00
60	40264673	CONTROL_BOX_COVER				1.00
61	40264674	SCREW				2.00
62	40263574	SCREW 9/64-40 L=6				1.00
63	40263325	GASKET SEALE				1.00
64	40262399	BED_OIL_SHIELD				1.00
65	40262397	SCREW				2.00

# UPPER SHAFT AND PICK LINE COMPONENTS



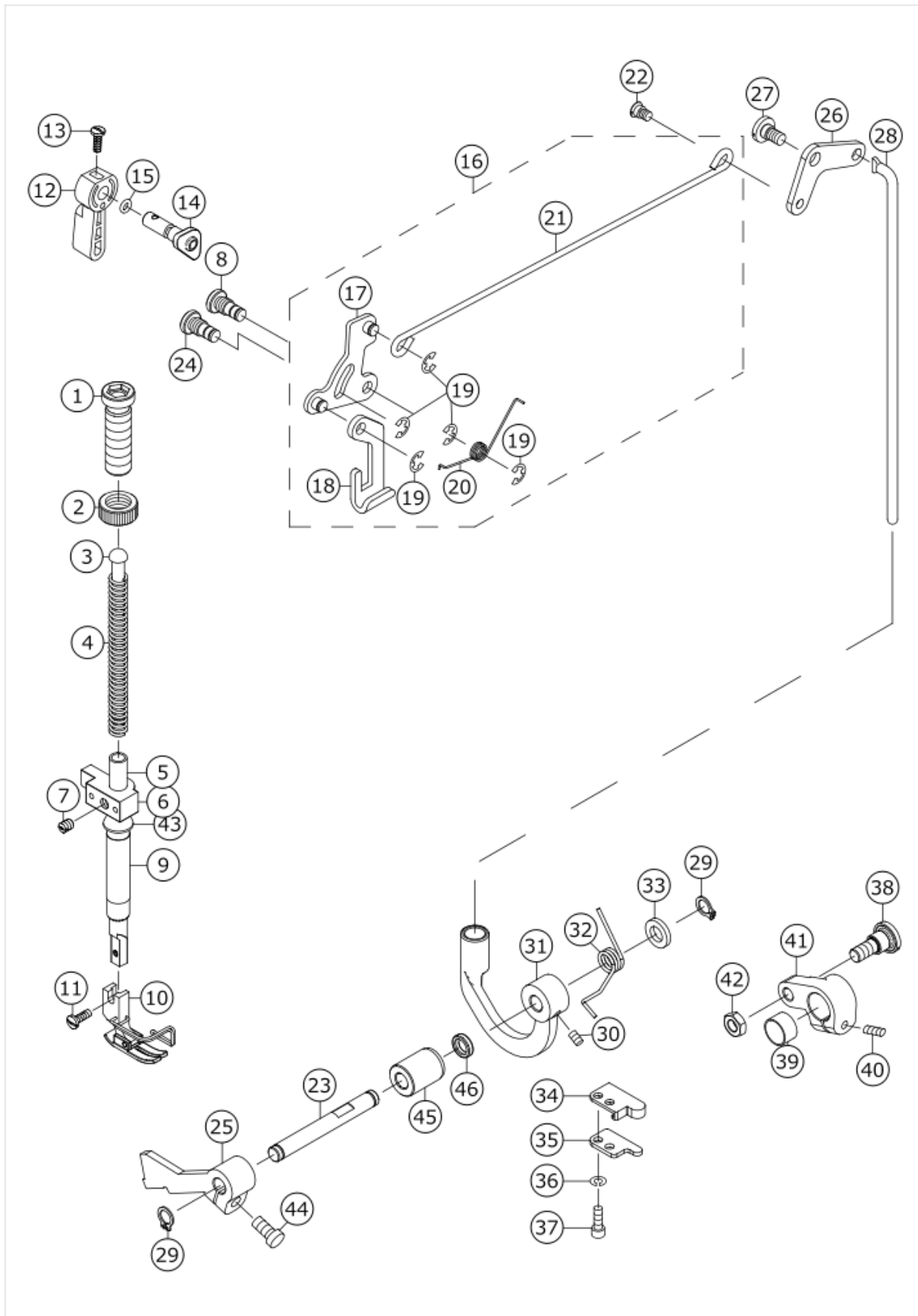
No.	品番	品名	備考	子部品	消耗品	個数
1	40263346	MAIN SHAFT				1.00
2	40263347	COUNTER WEIGHT				1.00
3	40263348	SCREW				4.00
4	40263349	SCREW				1.00
5	40263350	SCREW				1.00
6	40263351	O RING				1.00
7	40263352	FRONT BUSHING OF MAIN SHAFT				1.00
8	40263353	MID BUSHING OF MAIN SHAFT				1.00
9	40263354	SCREW				1.00
10	40263355	OIL SEAL				1.00
11	40263356	REAR BUSHING OF MAIN SHAFT				1.00
12	40263357	MOTOR				1.00
13	40263358	THE GASKET		*		1.00
14	40263359	MOTOR STATOR		*		1.00
15	40263361	SCREW		*		3.00
16	40263301	WASHER		*		4.00
17	40263362	SCREW		*		4.00
18	40263363	MOTOR ROTOR		*		1.00
19	40264676	ENCODER ASM.		*		1.00
20	40263365	SCREW		*		2.00
21	40264677	RUBBER PLUG		*		1.00
22	40263371	THREED TAKE-UP CRANK SHAFT				1.00
23	40263372	THREED TAKE-UP ASM.				1.00
24	40263373	SCREW		*		1.00
25	40263374	BEARING		*		2.00
26	40263375	NEEDLE BAR CONNECTING ROD		*		1.00
27	40263376	THREED TAKE-UP SHAFT		*		1.00
28	40263377	THREED TAKE-UP		*		1.00
29	40263378	THREED TAKE-UP CONNECTING ROD		*		1.00
30	40263383	GASKET SEALE		*		1.00
31	40263330	SCREW				2.00
32	40263380	SCREW				1.00
33	40263381	RETAINING RING				2.00
34	40263382	RETAINING RING				1.00
35	40263379	WHEEL				1.00
36	40263384	THE ADJUST PIN				1.00
37	40263385	SIDE PLATE GASKET				1.00
38	40263386	THRUST COLLAR ASM				1.00
39	40263387	OIL FELT				1.00
40	40263364	HEAD WHEEL				1.00
41	40263366	SCREW				2.00
42	40264696	SCREW				2.00

# NEEDLE BAR & THREAD TENSION COMPONENTS



No.	品番	品名	備考	子部品	消耗品	個数
1	40263388	RUBBER PLUG				1.00
2	40263389	UPPER BUSHING OF NEEDLE BAR				1.00
3	40263390	NEEDLE BAR				1.00
4	40263391	NEEDLE BAR HOLDER				1.00
5	40263392	SCREW 9/64-40 L=6				1.00
6	40263393	LOWER BUSHING OF NEEDLE BAR				1.00
7	40263394	NEEDLE BAR THREAD GUIDE				1.00
8	40263395	NEEDLE(DBX1#14)				1.00
9	40263396	SCREW 1/8-44 L=4.5				1.00
10	40263397	NEEDLE BAR THREAD GUIDE				1.00
11	40263398	SLIDE BLOCK				1.00
12	40264681	FIRST_THREAD_TENSION_ASM.				1.00
13	40263399	THREAD TENSION SPRING		*		1.00
14	40263401	BOBBIN WINDER TENSION DISC		*		2.00
15	40263402	THREAD TENSION SPRING		*		1.00
16	40263403	THREAD_TENSION_NUT		*		1.00
17	40264680	THREAD_TENSION_ASM.				1.00
18	40263405	TENSION POST SOCKET		*		1.00
19	40263406	SCREW 15/64-28 L=7		*		1.00
20	40263407	TAKE-UP SPRING		*		1.00
21	40263408	THREAD_TENSION_POST		*		1.00
22	40263409	TENSION DISC		*		2.00
23	40263410	TENSION DISC HOLDER		*		1.00
24	40263411	TENSION SPRING		*		1.00
25	40263412	TENSION DISC STOPPER		*		1.00
26	40263413	TENSION NUT		*		1.00
27	40263404	SET SCREW 9/64-40 L=4		*		1.00
28	40263415	TENSION RELEASE PIN SPRING				1.00
29	40263416	TENSION RELEASE SUPPORTING PIN				1.00
30	40263330	SCREW 11/64-40 L=6				1.00
31	40263417	SLIDE BLOCK 11/64-40 L=8				2.00
32	40263418	SCREW				2.00
33	40263419	MOUNTING PLATE				1.00
34	40263420	LOOSE WIRE ELECTROMAGNET				1.00
35	40263290	SCREW				2.00
36	40263421	ELECTROMAGNET COVER				1.00
37	40263422	SCREW				2.00
38	40263423	GASKET SEALE				1.00
39	40263400	SNAP RING				1.00
40	40263414	THREAD RELEASE PIN				1.00

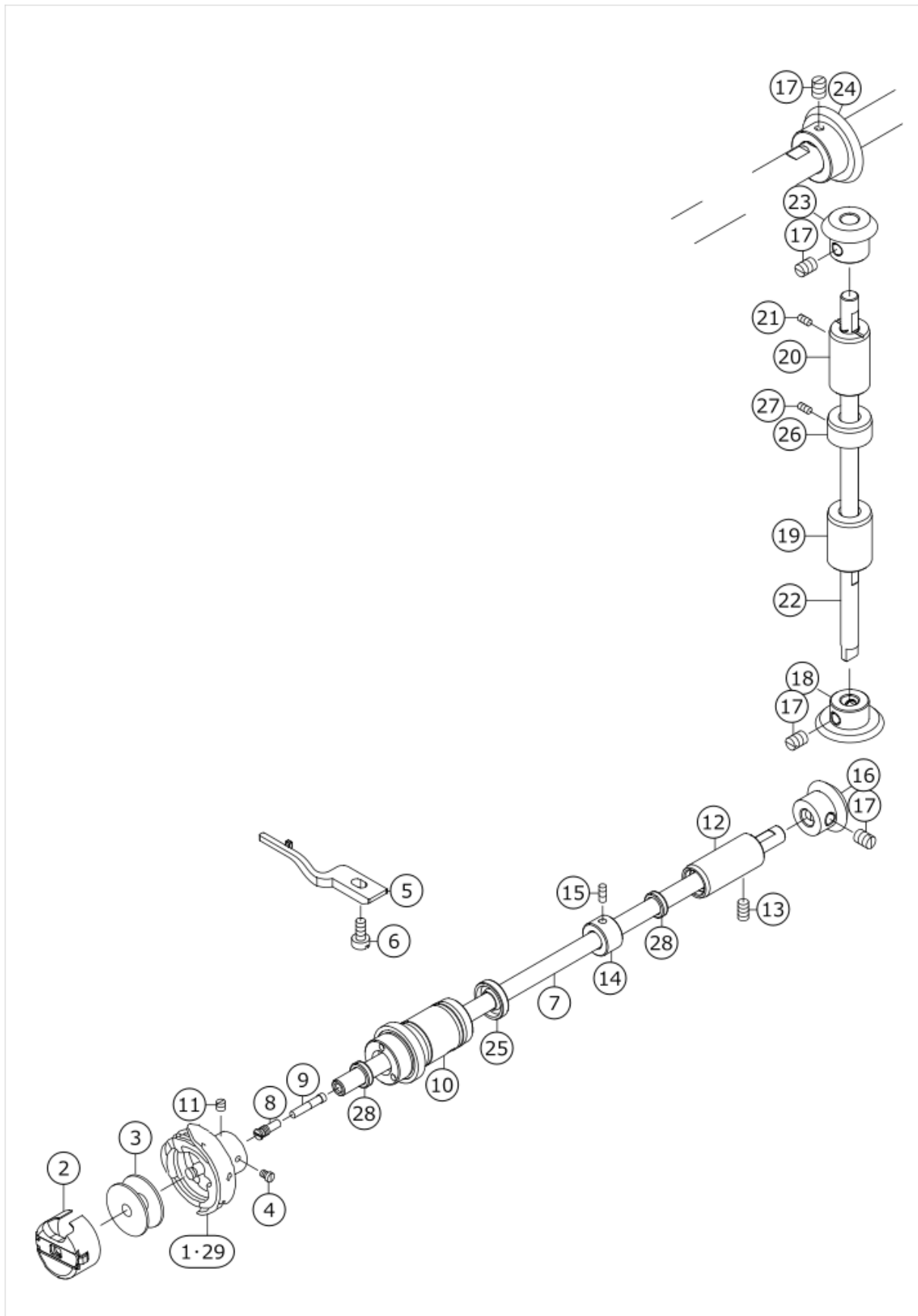
# HAND LIFTER COMPONENTS





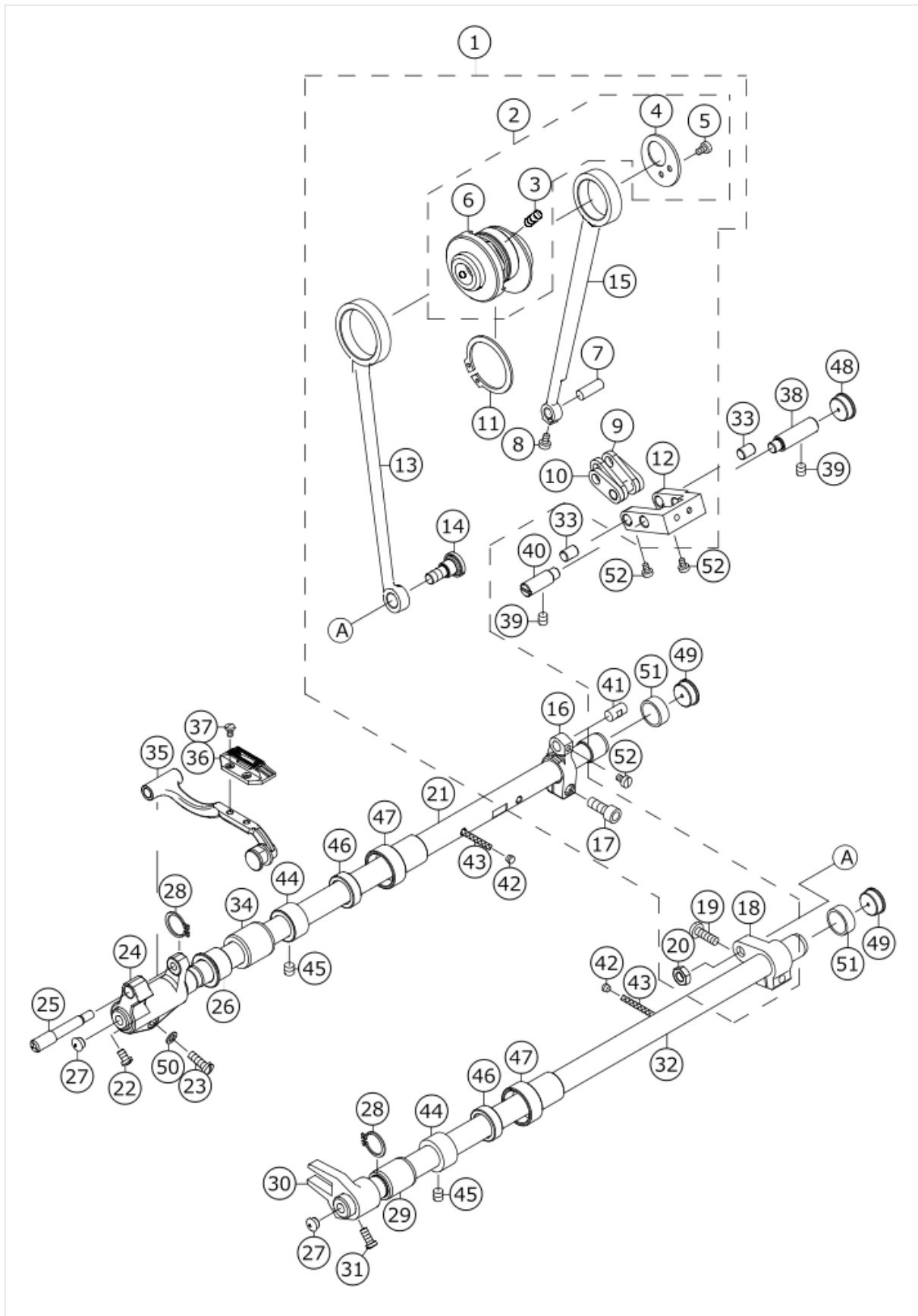
No.	品番	品名	備考	子部品	消耗品	個数
1	40263424	PRESSER SPRING REGULATOR				1.00
2	40263425	NUT 1/2-28				1.00
3	40263426	PRESSER GUIDE BAR				1.00
4	40263427	PRESSER SPRING				1.00
5	40263428	PRESSER GUIDE BAR				1.00
6	40263429	NEDDLE BAR GUIDE BRACKET				1.00
7	40263430	SCREW 1/4-40 L=8				1.00
8	40263431	PIN				1.00
9	40263432	PRESSER BAR BUSHING LOWER				1.00
10	40263433	PRESSER FOOT ASM.				1.00
11	40263434	SCREW 9/64-40 L=10.5				1.00
12	40263435	HAND LOFTER				1.00
13	40263434	SCREW 9/64-40 L=10.5				1.00
14	40263436	HAND LOFTER CAM ASM.				1.00
15	40263437	RUBBER RING				1.00
16	40263468	KNEE LIFTING COSS ROD ASM.				1.00
17	40263439	HAND LIFTER LINK ASM.		*		1.00
18	40263438	LIFTING LEVER		*		1.00
19	40263441	SNAP RING		*		5.00
20	40263448	FLAT MAT		*		1.00
21	40263447	LIFTING LEVER CONNECTING ROD		*		1.00
22	40263451	HINGE SCREW 3/16-32				1.00
23	40263445	AXLES				1.00
24	40263440	THREAD PIN				1.00
25	40263443	FOOT UP CRANK TWO				1.00
26	40263449	LIFTING LEVER LINK				1.00
27	40263450	HINGE SCREW 15/64-28				1.00
28	40263452	CONNECTING ROD				1.00
29	40263442	RETAINING_RING				2.00
30	40263446	SCREW				1.00
31	40263454	FOOTUP CRANK THREE				1.00
32	40263455	TORSION SPRING				1.00
33	40263456	THE GASKET				1.00
34	40263457	PRESSER FOOT PAD				1.00
35	40263458	FOOT BLOCK				1.00
36	40263459	SPRING WASHER				2.00
37	40263460	SCREW				2.00
38	40263461	HINGE_SCREW				1.00
39	40263462	ROLLER				1.00
40	40263366	SCREW				1.00
41	40263464	PUSH-UP CRANK				1.00
42	40263465	NUT				1.00
43	40263467	PRESSER BAR OIL SEAL				1.00
44	40263444	SCREW				4.00
45	40263469	SHAFT SLEEVE				1.00
46	40263470	GASKET SEALE				1.00

# UPRIGHT SHAFT & HOOK DRIVING SHAFT COMPONENTS



No.	品番	品名	備考	子部品	消耗品	個数
1	40263471	HOOK_ASM.(M)	FOR CHINA			1.00
2	40263472	BOBBIN CASE ASM.				1.00
3	40263473	BOBBIN				1.00
4	40263474	SCREW				2.00
5	40263475	POSTIONING FINGER				1.00
6	40263476	SCREW 11/64-40 L=9.5				1.00
7	40263477	HOOK DRIVING SHAFT				1.00
8	40263478	OIL SEAL SCREW ASM.				1.00
9	40263479	OIL WICK				1.00
10	40263480	FRONT BUSHING				1.00
11	40263474	SCREW				1.00
12	40263482	REAR BUSHING				1.00
13	40264697	SCREW				1.00
14	40263495	THRUST_COLLAR				1.00
15	40263484	SCREW 1/4-40 L=8				2.00
16	40263485	BEVEL GEAR SMALL				1.00
17	40263486	SCREW 1/4-40 L=8				8.00
18	40263487	BEVEL GEAR LARGE				1.00
19	40263488	LOWER BUSHING				1.00
20	40263489	UPPER BUSHING				1.00
21	40263490	SCREW 11/64-28 L=9				1.00
22	40263491	UPRING SHAFT				1.00
23	40263492	BEVEL GEAR SMALL				1.00
24	40263493	BEVEL GEAR LARGE				1.00
25	40263494	OIL SEAL 18				1.00
26	40263495	THRUST_COLLAR				1.00
27	40263496	SCREW 1/4-40 L=8				2.00
28	40263470	OIL SEAL 12				2.00
29	40264689	HOOK_ASM.(M)	FOR GENERAL EXPORT			1.00

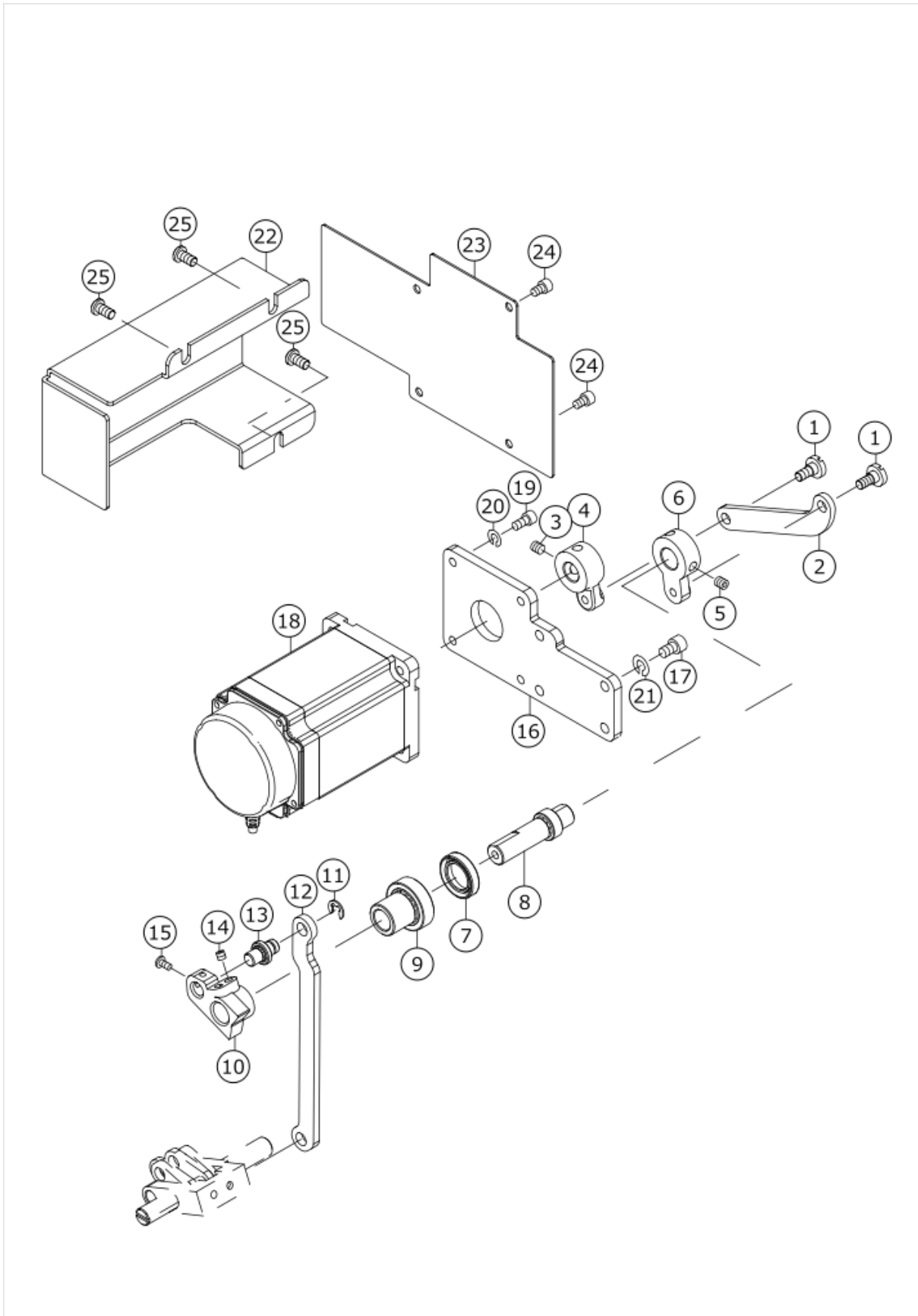
# FEED MECHANISM COMPONENTS



No.	品番	品名	備考	子部品	消耗品	個数
1	40264682	CONNECTING ROD ASM. M-TYPE				1.00
2	40263497	FEED DRIVE ECCENTRIC CAM ASM.		*		1.00
3	40263499	SCREW 1/4-40 L=11		*		2.00
4	40263500	THRUST COLLAR		*		1.00
5	40263501	SCREW 9/64-40 L=5		*		2.00
6	40263498	FEED DRIVE ECCENTRIC CAM		*		1.00
7	40263503	WALKING FOOT PIN		*		1.00
8	40263504	SCREW 9/64-40 L=6		*		1.00
9	40263505	LONG WALKING FOOT LINK		*		2.00
10	40263506	SHORT WALKING FOOT LINK		*		2.00
11	40263536	SNAP RING		*		1.00
12	40263508	WALKING FOOT ADJUST LINK		*		1.00
13	40263535	CONNECTING ROD		*		1.00
14	40263534	HINGE_SCREW		*		1.00
15	40263502	ROCKER SHAFT CONNECTING ROD		*		1.00
16	40263513	FEED ROCKER SHAFT CRANK ASM.		*		1.00
17	40263515	SCREW 9/64-28 L=14		*		1.00
18	40263528	REAR CRACK ASM.		*		1.00
19	40263529	SCREW 3/16-28 L=12		*		1.00
20	40263533	NUT		*		1.00
21	40263516	FEED ROCKER SHAFT				1.00
22	40263517	SCREW				1.00
23	40263518	SCREW				1.00
24	40263519	FEED CRACKET				1.00
25	40263520	FEED BAR SHAFT				1.00
26	40263521	FEED ROCKER SHAFT BUSHING				1.00
27	40263522	RUBBER PLUG				2.00
28	40263523	RETAINING RING				2.00
29	40263524	FEED DRIVING SHAFT BUSHING				1.00
30	40263525	DRIVING SHAFT CRANK ASM.				1.00
31	40263526	SCREW 11/64-40 L=10.5				1.00
32	40263527	FEED DRIVING SHAFT				1.00
33	40263507	WALKING FOOT PIN				2.00
34	40263512	FEED DRIVING SHAFT BUSHING				1.00
35	40263530	FEED ROCKER BASE ASM.				1.00
36	40263531	FEED DOG				1.00
37	40263532	SCREW 1/8-44 L=6				2.00
38	40263510	FULCRUM_SHAFT_LONG				1.00
39	40263511	SCREW 15/64-28 L=7				2.00
40	40263509	FULCRUM_SHAFT_SHORT				1.00
41	40263514	WALKING FOOD PIN				1.00
42	40263537	RUBBER PLUG				2.00
43	40263538	OIL WICK				1.00
44	40263539	THRUST_COLLAR				2.00
45	40263540	SCREW 1/4-40 L=4				4.00
46	40263541	OIL SEAL 22				2.00
47	40263542	BUSHING MID				2.00
48	40263543	RUBBER_PLUG				1.00
49	40263544	RUBBER PLUG				2.00
50	40263545	THE GASKET				1.00

51	40264678	BUSHING REAR				2.00
52	40263504	SCREW 9/64-40 L=6				3.00

# FEED ADJUST MECHANISM COMPONENTS



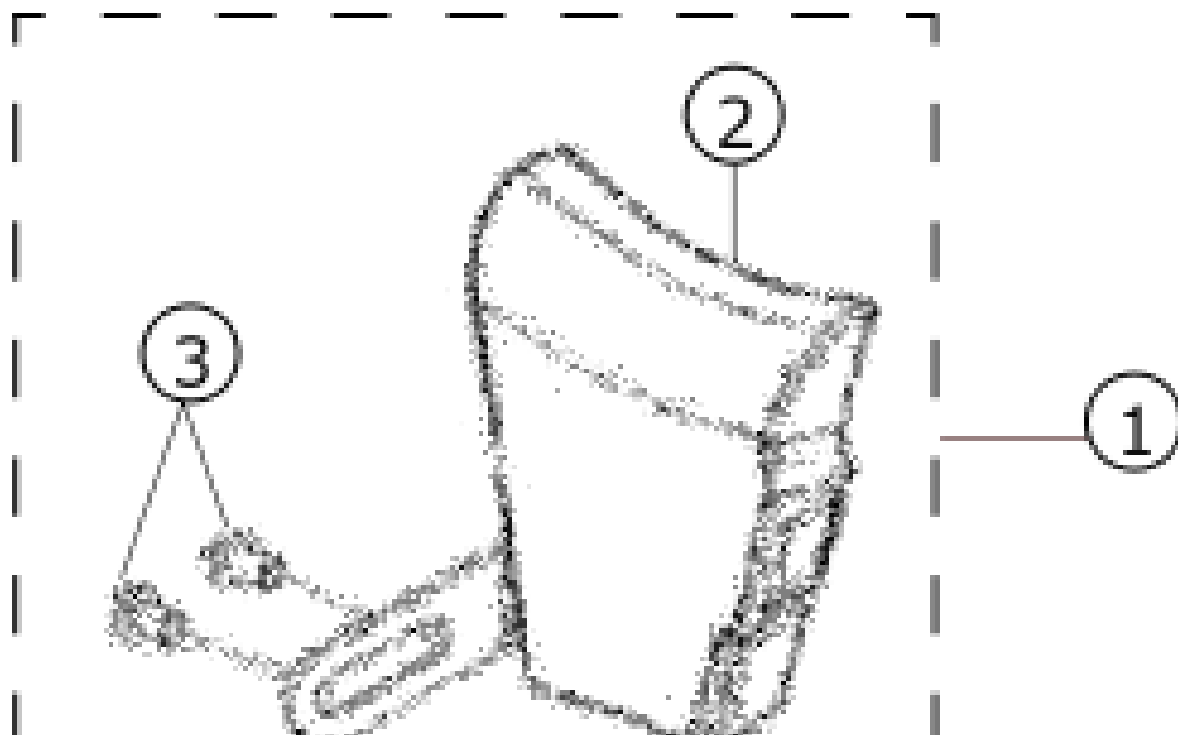
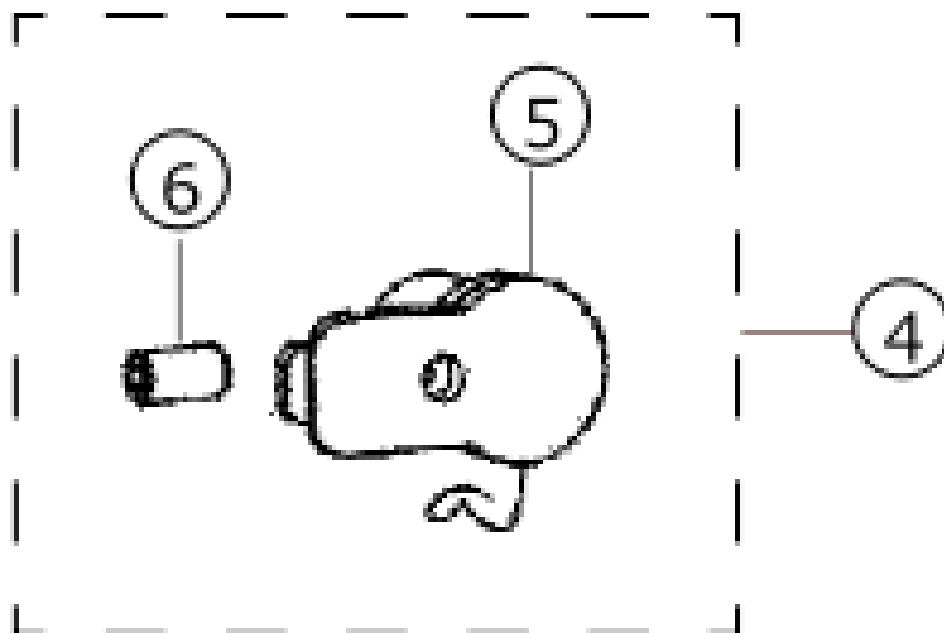
No.	品番	品名	備考	子部品	消耗品	個数
1	40263546	HINGE_SCREW				2.00
2	40263547	EXTERNAL CONNECTING ROD				1.00
3	40263366	SCREW				2.00
4	40263548	MOTOR CRANK				1.00
5	40263366	SCREW				2.00
6	40263550	ADJUSTER CRANK				1.00
7	40263551	OIL SEAL				1.00
8	40263552	ADJUSTER SHAFT				1.00
9	40263553	REGULATING SLEEVE				1.00
10	40263554	ADJUSTER				1.00
11	40263555	SNAPRING				2.00
12	40263556	FEED ROD				1.00
13	40263557	CONNECTING ROD PIN				1.00
14	40263446	SCREW				2.00
15	40263558	SCREW				1.00
16	40263559	MOUNTING PLATE				1.00
17	40263560	SCREW				4.00
18	40263561	REGULATING MOTOR				1.00
19	40263562	SCREW				4.00
20	40263563	SPRING MAT4				4.00
21	40263564	SPRING MAT5				4.00
22	40263565	MOTOR COVER BOX				1.00
23	40263566	PROTECTION PLATE				1.00
24	40263299	SCREW				4.00
25	40263290	SCREW				3.00





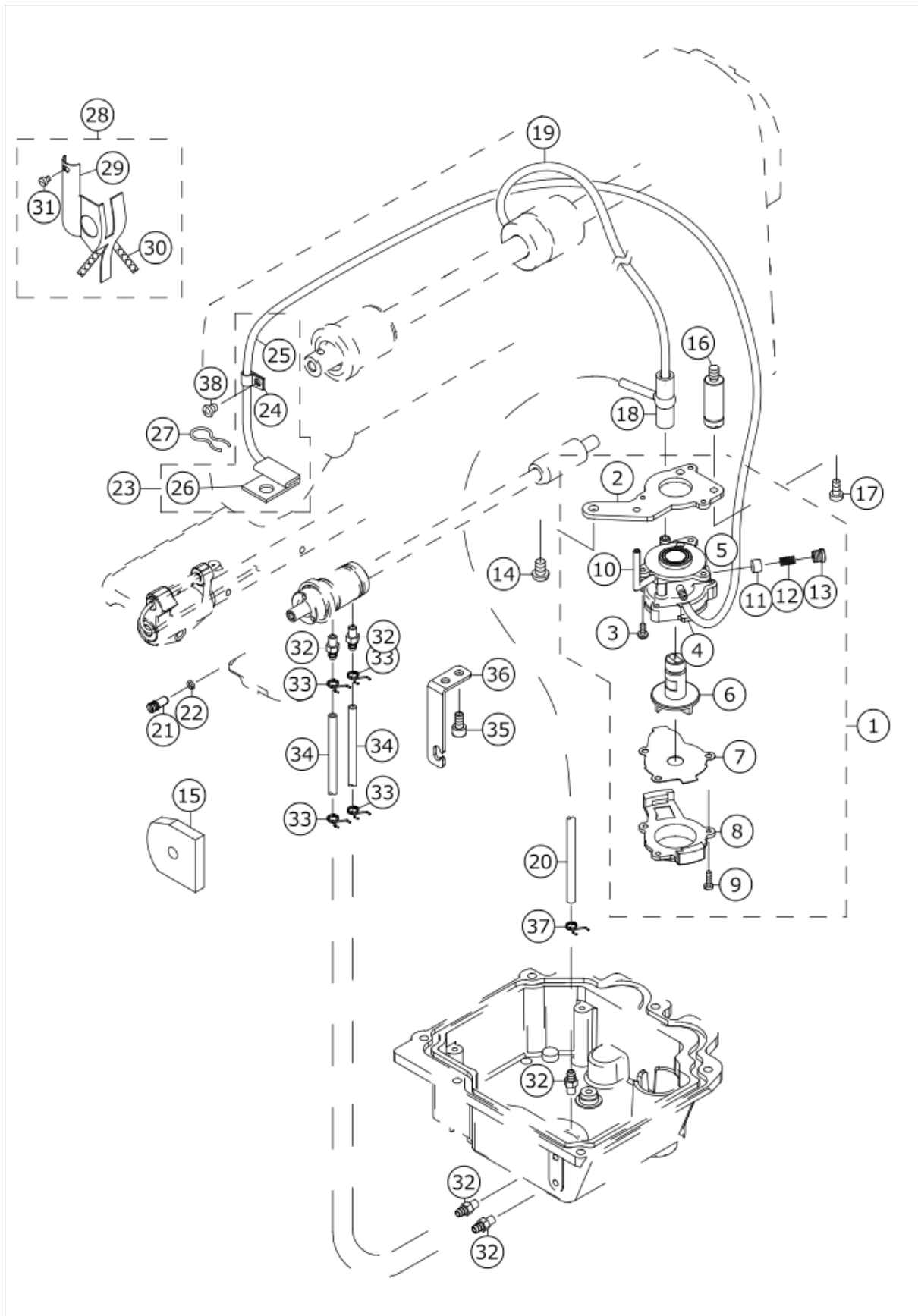
No.	品番	品名	備考	子部品	消耗品	個数
1	40263567	DRIVE MOTOR				1.00
2	40263568	WASHER				1.00
3	40263446	SCREW				1.00
4	40263570	FIXED KNIFE				1.00
5	40263571	FIXED ROUND KNIFE BRACKET				1.00
6	40263572	DISPART THREAD SHUTTLE				1.00
7	40263573	NUT 11/64-40				1.00
8	40264699	SCREW				1.00
9	40263575	MAIN ROUND KNIFE BRACKET				1.00
10	40263576	KNIFE HOLDER PRESSER PLATE				1.00
11	40263577	SCREW M4				2.00
12	40263578	SCREW M3 L=8				3.00
13	40263579	DRIVING KNIFE				1.00
14	40263580	SCREW 11/64-40				3.00
15	40263581	KNIFE SHAFT CRANK ROD				1.00
16	40263582	SCREW 11/64-40				2.00
17	40263583	NUT M4				2.00
18	40263584	TRIMMING CRANK				1.00
19	40263585	BLOCK				1.00
20	40263586	SCREW 3/16-28 L=14.5				1.00
21	40263587	REPLACE SPRING				1.00
22	40263588	DRIVE SHAFT				1.00
23	40263589	BUSHING				1.00
24	40263496	SCREW 1/4-40 L=8				2.00
25	40263591	DRIVE SHAFT				1.00
26	40263592	CONNECTING ROD				1.00
27	40263593	SCREW				2.00
28	40263594	LIVE KNIFE ADJUST LINK				1.00
29	40263595	SCREW 11/64-40 L=9.5				1.00
30	40263596	LIVE KNIFE ADJUST LINK				1.00
31	40263597	BUSHING				1.00
32	40263598	TANGENT PIN				1.00
33	40263465	TANGENT PLATE				1.00
34	40263599	ROLLER				1.00
35	40263600	AXIAL SCREW				1.00
36	40263601	TANGENT CRANK				1.00
37	40263446	SCREW				2.00
38	40263602	MOTOR MOUNTING PLATE NOE				1.00
39	40263603	MOTOR MOUNTING PLATE TWO				1.00
40	40263604	SNAPRING				1.00
41	40263605	SCREW				4.00
42	40264700	SCREW				1.00

# AUTOMATIC REVERSE FEED & NB COMPONENTS



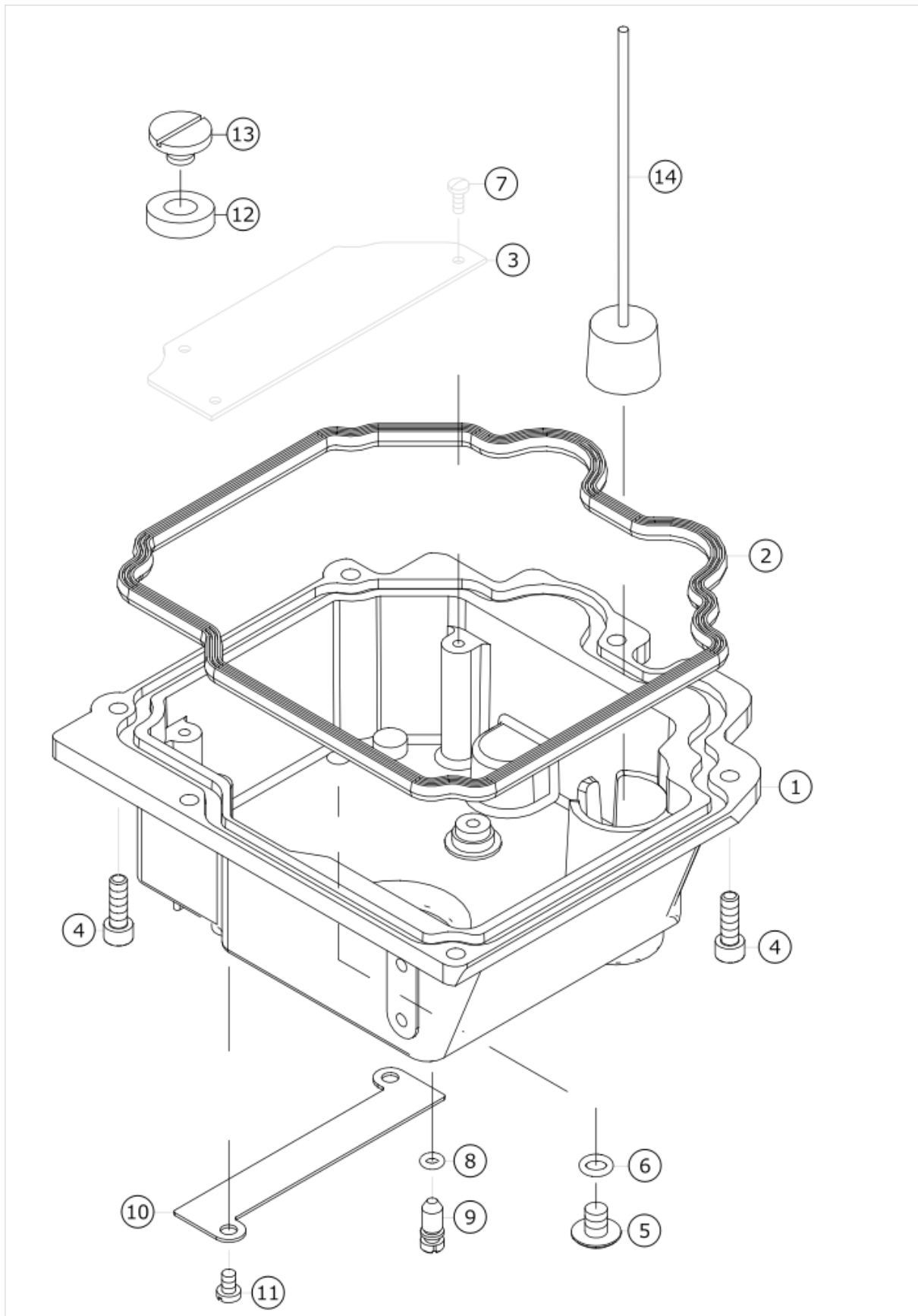
No.	品番	品名	備考	子部品	消耗品	個数
1	40263606	REVEVSE SEWING SWITCH ASM.				1.00
2	40263607	REVEVSE SEWING SWITCH		*		1.00
3	40263290	SCREW		*		2.00
4	40263608	ELECTRIC CLAMP ASM.				1.00
5	40263609	ELECTRIC CLAMP		*		1.00
6	40263610	SCREW		*		1.00

# OIL LUBRICATION COMPONENTS



No.	品番	品名	備考	子部品	消耗品	個数
1	40263611	LUBRICATING OIL PUMP ASM.				1.00
2	40263612	OIL PUMP INSTALLING BASE		*		1.00
3	40263613	SCREW 15/64-28 L=9		*		3.00
4	40263614	OIL PUMP		*		1.00
5	40263615	OIL PUMP BUSHING		*		1.00
6	40263616	OIL PUMP IMPELLER		*		1.00
7	40263617	OIL PUMP IMPELLER COVER		*		1.00
8	40263618	LUBRICAING OIL PUMP COVER		*		1.00
9	40263619	SCREW		*		3.00
10	40263620	HOOK DRIVING SHAFT OIL TUBE		*		1.00
11	40263621	PLUNGER		*		1.00
12	40263622	PLUNGER SPRING		*		1.00
13	40263623	SCREW		*		1.00
14	40263624	SCREW				1.00
15	40263625	SPONGE				1.00
16	40263626	OIL PUMP SUPPORT				1.00
17	40263476	SCREW 11/64-40 L=9.5				1.00
18	40263627	RUBBER JOINT				1.00
19	40263628	MAIN SHAFT OIL TUBE				1.00
20	40263629	OIL TUBE				1.00
21	40263630	OIL ADJUSTING SCREW				1.00
22	40263631	RUBBER RING				1.00
23	40264695	RETURN PIPE ASM.				1.00
24	40263633	OIL RETURN TUBE HOLDER		*		1.00
25	40263632	OIL RETURN GUARD		*		1.00
26	40263634	OIL FELT		*		1.00
27	40263635	OIL FELT PRESSER				1.00
28	40263636	OIL WICK SUPPORT ASM.				1.00
29	40263637	OIL WICK SUPPORT		*		1.00
30	40263638	OIL WICK		*		1.00
31	40263639	SCREW 1/8-44 L=4		*		1.00
32	40263643	OIL JOINT				5.00
33	40263644	OIL TUBE HOLDER				4.00
34	40263645	OIL TUBE				2.00
35	40263646	SCREW				2.00
36	40263647	OIL_TUBE_HOLDER				1.00
37	40263648	OIL TUBE HOLDER				1.00
38	40263308	SCREW 1/8-28 L=6				1.00

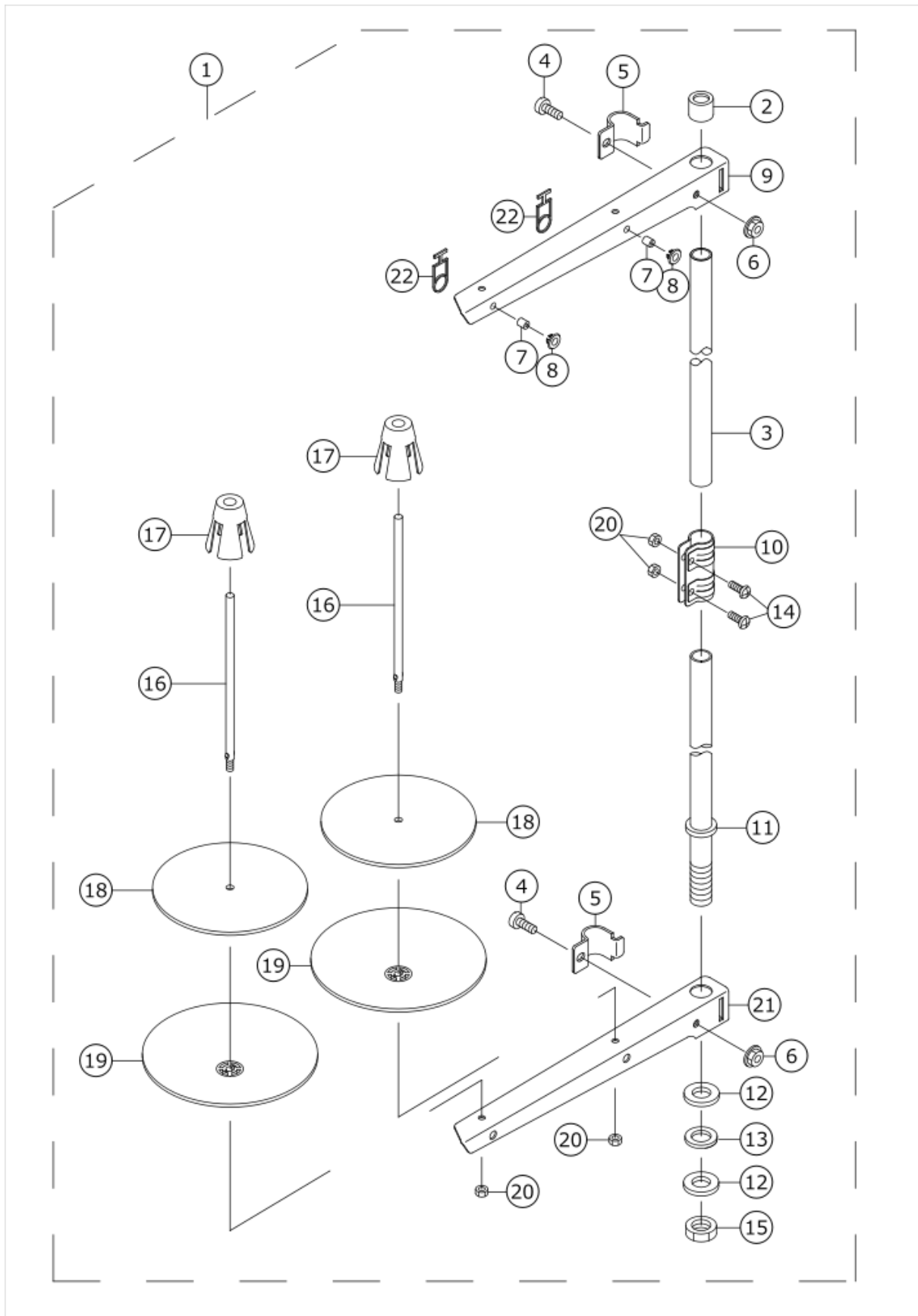
# OIL SHIELD COMPONENTS



No.	品番	品名	備考	子部品	消耗品	個数
1	40263649	OIL PLATE				1.00
2	40263650	OIL PLATE GASKET				1.00
3	40263651	OIL PLATE BATTLE				1.00
4	40263444	SCREW				6.00
5	40263652	OIL EXPRACTION HOLE SCREW M8				1.00
6	40263653	RUBBER RING				1.00
7	40263654	SCREW				3.00
8	40263655	RUBBER RING				1.00
9	40263656	SCREW				1.00
10	40263657	PRESSURE PLATE				1.00
11	40263658	SCREW				2.00
12	40263659	MAGNET				1.00
13	40263660	SCREW				1.00
14	40263661	OIL PLATE SUBASSEMBLY				1.00

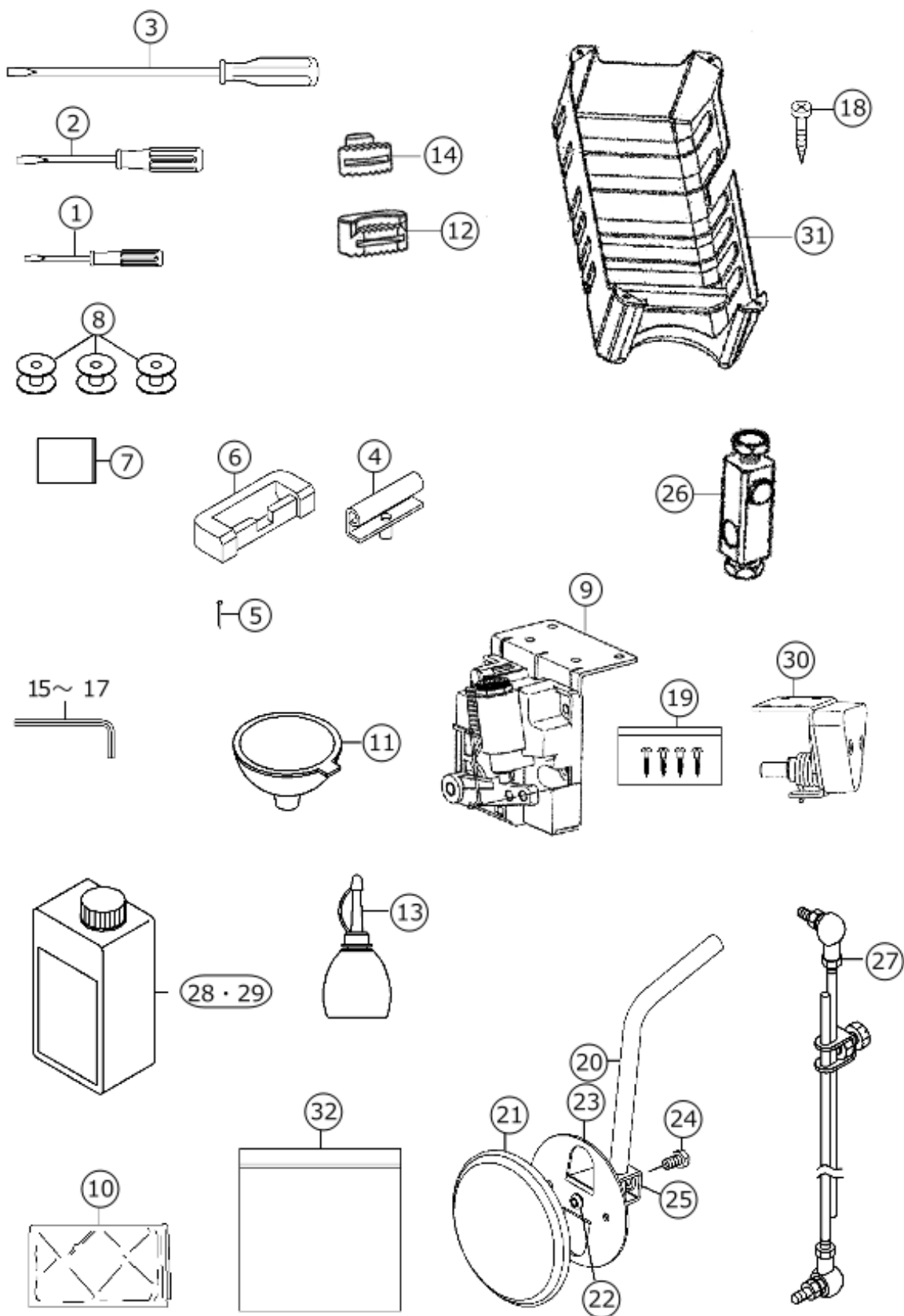


# THREAD STAND COMPONENTS



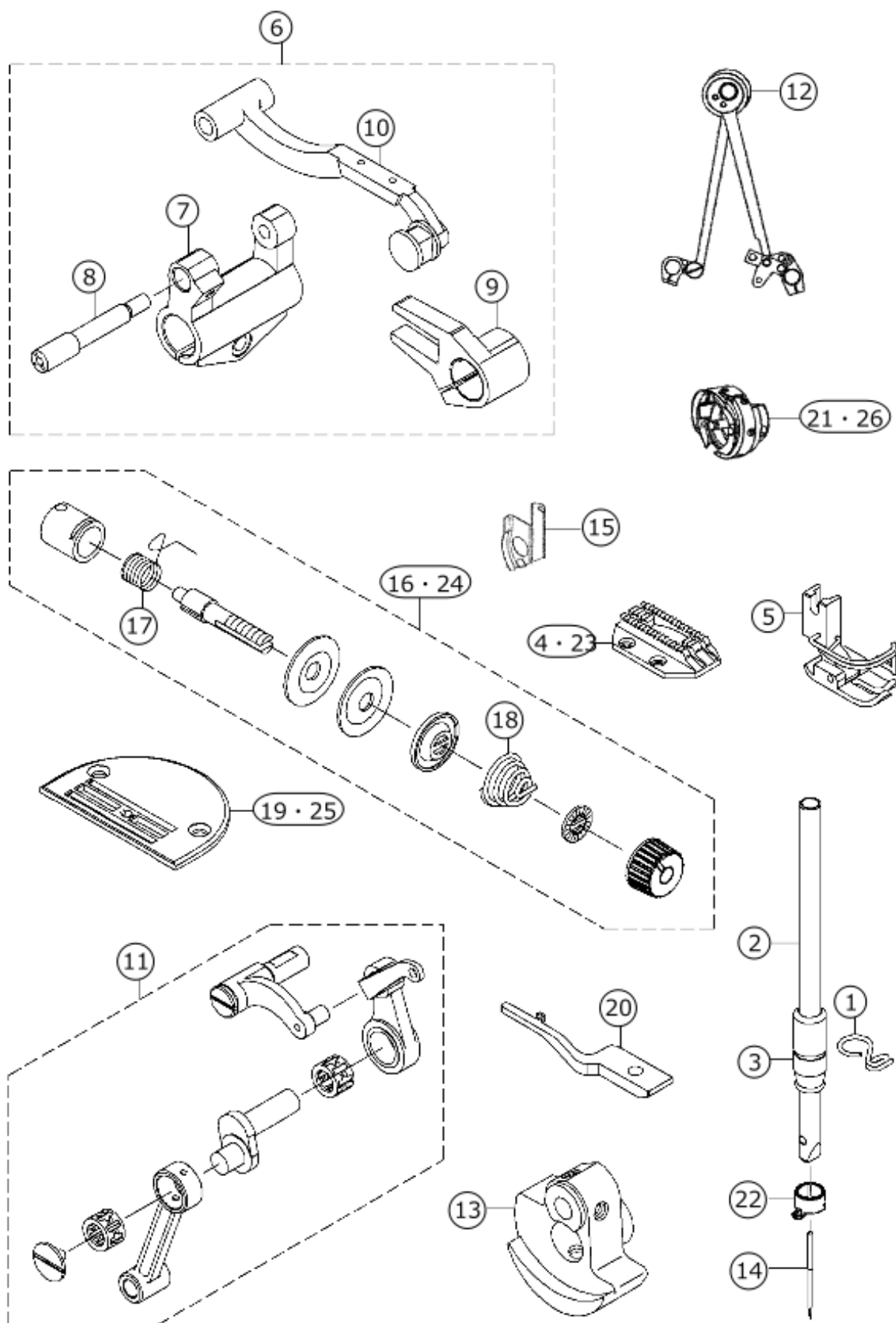
No.	品番	品名	備考	子部品	消耗品	個数
1	40263663	THREAD STAND AMS.				1.00
2	40263664	COLUMN CAP		*		1.00
3	40263665	COLUMN PIPE(UPPER)		*		1.00
4	40263666	SCREW		*		2.00
5	40263667	THREAD GUIDE ARM JOINT		*		2.00
6	40263668	NUT		*		2.00
7	40263669	THREAD GUIDE PIPE		*		2.00
8	40263670	THREAD GUIDE BUSHING		*		2.00
9	40263671	THREAD HANGER(2 SPOOLS TUPE)		*		1.00
10	40263672	COLUMN PIPE CONNECTOR		*		1.00
11	40263673	COLUMN PIPE(LOWER)		*		1.00
12	40263674	WASHER		*		2.00
13	40263675	WASHER		*		1.00
14	40263676	SCREW		*		2.00
15	40263677	NUT		*		1.00
16	40263678	SPOOL PIN		*		2.00
17	40263679	SPOOL CUSHION		*		2.00
18	40263680	SOFT CUSHION OF THREAD PLARE		*		2.00
19	40263681	THREAD PLATE		*		2.00
20	40263682	NUT		*		4.00
21	40263683	THREAD HANGE(LOWER)		*		1.00
22	40263684	THREAD GUIDE RING		*		2.00

# ACCESSORIE PART COMPONENTS



No.	品番	品名	備考	子部品	消耗品	個数
1	40263685	SCREW DRIVER (SMALL)				1.00
2	40263686	SCREW DRIVER (MIDDLE)				1.00
3	40263687	SCREW DRIVER (LARGE)				1.00
4	40263688	HINGE COMPL				2.00
5	40263689	NAIL				8.00
6	40263690	RUBBER CUSHION				2.00
7	40263395	NEEDLE				4.00
8	40263473	BOBBIN				3.00
9	40215706	FOOT SWITCH				1.00
10	40263692	FRAMEVINYL COVER				1.00
11	40263693	FUNNEL				1.00
12	40263694	NOSE SUPPORT				2.00
13	40263695	OILER ASM.				1.00
14	40263696	DIE CUSHION				2.00
15	40263697	WRENCH				1.00
16	40263698	WRENCH				1.00
17	40263699	WRENCH				1.00
18	40263700	SCREW				6.00
19	40264644	SCREW				1.00
20	40264645	BENT SHAFT				1.00
21	40264646	SOFT MAT				1.00
22	40264647	MAT				1.00
23	40264648	PLATE				1.00
24	40264649	JOINT SCREW				1.00
25	40264650	JOINT				1.00
26	40264651	JOINT				1.00
27	40264652	PEDAL LEVER				1.00
28	40263283	OIL BOTTLE WITH OIL				1.00
29	40264653	RUBBER MAT				1.00
30	40264654	ELECTRONIC KNEES BY				1.00
31	40264655	DISK TRAY				1.00
32	40264675	ACCESSORY_BAG				1.00

# FOR HEAVY-WEIGHT MATERIALS



No.	品番	品名	備考	子部品	消耗品	個数
1	40264656	NEEDLE GUIDE H-TYPE				1.00
2	40264657	NEEDLE H-TYPE				1.00
3	40264658	NEEDLE LOWER METAL H-TYPE				1.00
4	40264659	FEED DOG H-TYPE				1.00
5	40264660	PRESSER FOOT ASM. H-TYPE				1.00
6	40264661	FEED MECHA ASM. H-TYPE				1.00
7	40264683	FEED CRACKET H-TYPE		*		1.00
8	40264684	FEED BAR SHAFT H-TYPE		*		1.00
9	40264685	DRIVING SHAFT CRANK ASM. H-TYPE		*		1.00
10	40264686	FEED ROCKER BASE ASM. H-TYPE		*		1.00
11	40264662	THREAD TAKE-UP ASM. H-TYPE				1.00
12	40264663	CONNECTING ROD ASM. H-TYPE				1.00
13	40264664	COUNTER WEIGHT H-TYPE				1.00
14	40264665	NEEDLE H-TYPE				1.00
15	40264666	OIL SHIELD H-TYPE				1.00
16	40264667	THREAD TENSION ASM. H-TYPE				1.00
17	40264687	TAKE-UP SPRING H-TYPE		*		1.00
18	40264688	TENSION SPRING H-TYPE		*		1.00
19	40264668	NEEDLE PLATE H-TYPE				1.00
20	40264669	POSTIONING FINGER H-TYPE				1.00
21	40264670	HOOK_ASM.(H)	FOR CHINA			1.00
22	40262398	NEEDLE BAR THREAD GUIDE H-TYPE				1.00
23	11403003	FEED DOG H-TYPE	SPARE PARTS			1.00
24	22962054	THREAD TENSION ASM. H-TYPE	SPARE PARTS			1.00
25	11400801	NEEDLE PLATE H-TYPE	SPARE PARTS			1.00
26	40264690	HOOK_ASM.(H)	FOR GENERAL EXPORT			1.00



# HOW TO MAKE USE OF THIS PARTS LIST

## HOW TO MAKE USE OF THIS PARTS LIST

### 1.Explanation of codes

1)"\*"mark.....means this part is changed from the previous parts book.

As to the details of the change, refer to the "List for information of change".

2)"#01".....refer to "Note" explanation at bottom of page.

### 2.Codes on the "Qty" column

· Each numeral indicates the number of parts required.

· "0.1" and "2.5" indicate the length (in meters) of the respective parts.

3.Parentheses mean that the corresponding part is a subpart that constructs an assembly part.

4.Dotted lines on the Figures indicate assembly parts.

5.As to the parts with marks of "☆"(consumable parts) and "◎"(optional parts)on the respective parts, it is recommended to prepare spares.

## パーツリストご利用に際して

### 1."注記"欄の記号説明

1) "\*"印.....前回のパーツブックに比較して今回変更された部品を意味します。

変更内容は、"変更情報リスト"を参照してください。

2) "#01".....ページ下の"注記"の説明を参照してください。

2.数量欄の数字は、個数を表し、0.1、2.5等の数値は、長さ（単位メートル）を表します。

3.数量欄の（ ）は、組部品を構成している子部品であることを意味します。

4.イラストページの-----枠は、組構成であることを意味します。

5.リストページの"☆"（消耗部品）、"◎"（オプション部品）の印がついた部品は、予備を準備しておくことをお奨めします。